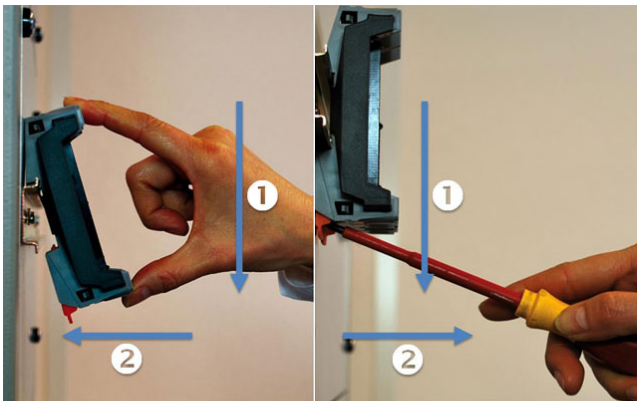


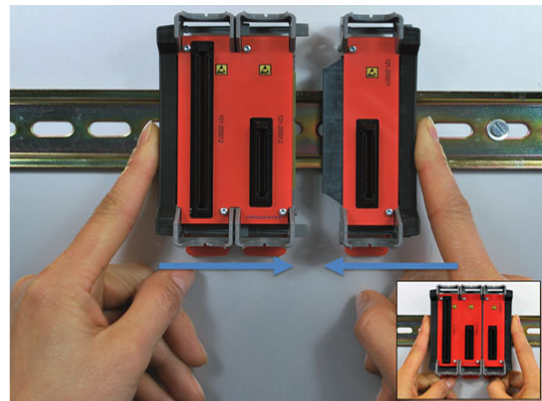
Technical Data - Head Station 1A/1B/1C

Technical Data - Head Station 1A/1B/1C	
Type differences (Hardware is identical with all types)	
Head Station 1A	No ProfiTrace OE
Head Station 1B	ProfiTrace OE for 2 PROFIBUS networks
Head Station 1C	ProfiTrace OE for 4 PROFIBUS networks + ProfiTrace 2 live streaming + OPC
For all Head Stations	CommDTM
Backplane	
Modules Current available for the backplane PROFIBUS networks Compatible backplane units	32 (10 repeater modules positioned in the first 10 slots) 2.5 A 4 101-200023, 101-200012
Power supply specifications	
Nominal supply voltage Current consumption Power Reverse polarity protection Redundant power supply Wire diameter	10.8 .. 26.4 VDC 800 mA (fully loaded) 20 W Yes Yes < 2.5 mm ²
Ethernet	
Connector Cable length Link speed MAC address Supported protocols	RJ 45 Max. 100 m 10 / 100 Mbps 9C.B2.06.xx.xx.xx (label on the side of the Head Station) HTTP, FTP, SMTP, TELNET, DHCP, SNMP
Default IP address after reset/purchase Connections	192.168.1.254 20 simultaneous web server clients
Relay contact	
Resistance Voltage Current	300 mOhm (plug included) 170 VAC 0.5 A

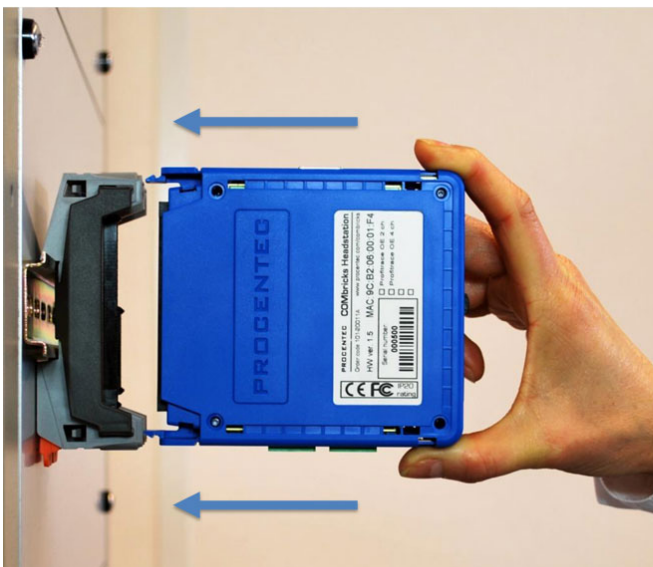
Technical Data - Head Station 1A/1B/1C	
SD Card	
Types Size	SD and SDHC Max. 32 GB (2 GB is provided)
Others	
MTBF Audio jack	To be defined Not supported yet
PROCEN TEC Turfschipper 41 2292 JC WATERINGEN (NL)	Tel.: +31-174-671800 Fax: +31-174-671801 Email: info@procentec.com



Mounting and un-mounting backplanes



Adding additional backplanes



Inserting modules



Powering the Head Station